

Air Liquide is committed to conducting its business in compliance with all relevant National and State laws and regulations to ensure the health and safety of all its employees, customers and contractors.

Chain of Responsibility is a key area of the commitment to provide a safe working environment to all personnel involved in the Gas Industry supply chain.

Air Liquide acknowledges its roles within the Chain of Responsibility legislation and has consequently developed an on-line training portal targeting the hazards associated with loading and transporting its range of gas cylinders and related products. This training portal specifically addresses all the high risk aspects associated with Chain of Responsibility including; load restraint, mass management, driver fatigue, vehicle suitability and driver qualification.

Successfully completing this on-line induction will qualify you to pick-up gas cylinders or related products from one of the Air Liquide sites.

Instructions

1

Copy and Paste the URL into your browser:

<https://airliquide.wodongatafe.edu.au/>

*** Cookies and pop ups must be enabled on your browser

2

This will take you to the log in screen

AIR LIQUIDE Social Networks You are not logged in. (Log in)

Welcome

Welcome to Air Liquide Australia's online induction portal!

Air Liquide is committed to conducting its business in compliance with all relevant National and State laws and regulations to ensure the health and safety of all its employees, customers and contractors. Chain of Responsibility is a key area of the commitment to provide a safe working environment to all personnel involved in the Gas Industry supply chain.

Air Liquide acknowledges its roles within the Chain of Responsibility legislation and has consequently developed an on-line training portal targeting the hazards associated with loading and transporting its range of gas cylinders and related products.

This training portal specifically addresses all the high risk aspects associated with Chain of Responsibility including; load restraint, mass management, driver fatigue, vehicle suitability and driver qualification. Successfully completing this on-line Induction will qualify you to pick-up gas cylinders or related products from one of the Air Liquide sites.

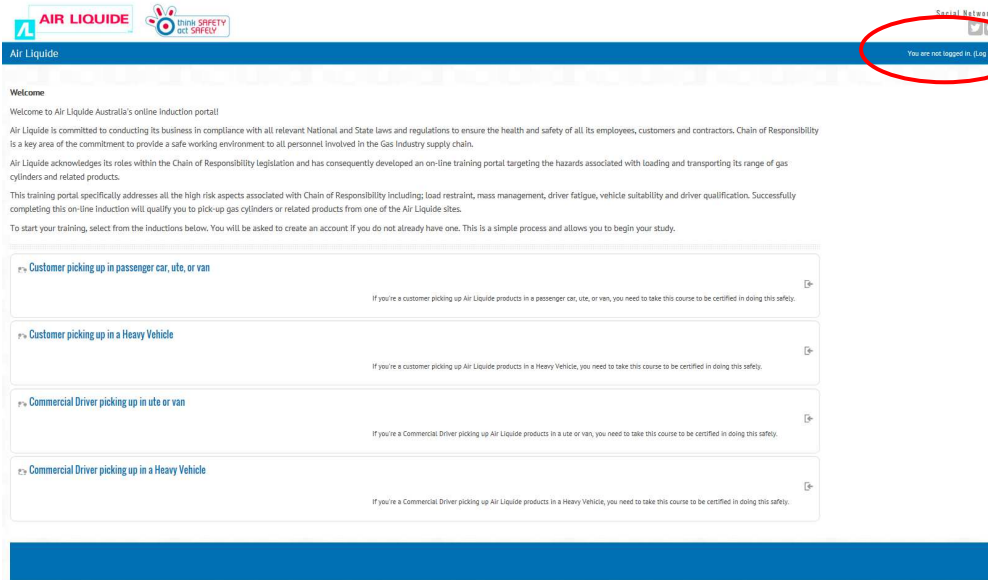
To start your training, select from the inductions below. You will be asked to create an account if you do not already have one. This is a simple process and allows you to begin your study.

- Customer picking up in passenger car, ute, or van**
If you're a customer picking up Air Liquide products in a passenger car, ute, or van, you need to take this course to be certified in doing this safety.
- Customer picking up in a Heavy Vehicle**
If you're a customer picking up Air Liquide products in a Heavy Vehicle, you need to take this course to be certified in doing this safety.
- Commercial Driver picking up in ute or van**
If you're a Commercial Driver picking up Air Liquide products in a ute or van, you need to take this course to be certified in doing this safety.
- Commercial Driver picking up in a Heavy Vehicle**
If you're a Commercial Driver picking up Air Liquide products in a Heavy Vehicle, you need to take this course to be certified in doing this safety.

3

Create a new account by:

1. Clicking “Log In” at the top right hand side of the screen *OR*
2. Selecting one of the four course headings



Log In

4

This will take you to the Log in or Create new account screen

Username

Password

Remember username

[Forgotten your username or password?](#)

Cookies must be enabled in your browser

Hi! For full access to courses you'll need to take a minute to create a new account for yourself on this web site. Here are the steps:

1. Fill out the [New Account](#) form with your details.
2. Now, select the course you want to participate in.
3. You will then be able to log in with your username and password.
4. You can then enrol into the course that is relevant to your position.

Select “Create New Account”

5

This will take you to the “Choose your username and password” screen

Choose your username and password

Username*

Password* Unmask

Email address*

First name*

Surname*

City/town

reCAPTCHA

Enter the words above

[Get another CAPTCHA](#)
[Get an audio CAPTCHA](#)

Other fields

Company*

Driver's licence number*

Issuing state of licence*

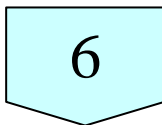
All fields with an asterisk are mandatory

Username must be entered in lowercase

Email Address is only used for retrieval of a lost password

Driver's Licence number is used for verification of identity when presenting to Air Liquide for collection of gas

Choose "Create my new account" once all details entered



You will be returned to the home screen once you have created a log in. Enter your log in details by:

1. Clicking "**Log In**" at the top right hand side of the screen OR
2. Selecting one of the four course headings

Log In

Course headings

7

Enter your log in details

Username

Password

Remember username

[Forgotten your username or password?](#)

Cookies must be enabled in your browser [?](#)

8

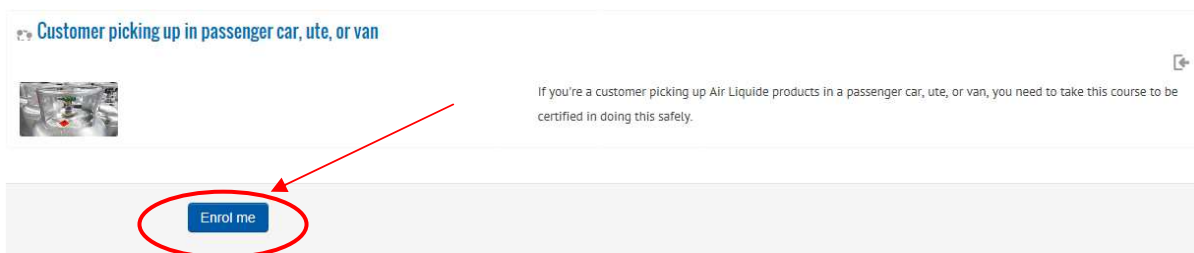
After logging in, and depending on your selection in Step 6, you will either be returned to the home screen where you can select one of the four courses *OR* you will be directed straight to the “Enrol Me” screen which follows.

Pick the appropriate course you wish to take:

1. **Customer picking up in passenger car, ute or van**
2. **Customer picking up in a heavy vehicle**
3. **Commercial driver picking up in a ute or van**
4. **Commercial driver picking up in a heavy vehicle**

9

Select “Enrol Me”



Customer picking up in passenger car, ute, or van

If you're a customer picking up Air Liquide products in a passenger car, ute, or van, you need to take this course to be certified in doing this safely.

Select the Icon “Start Induction Here” on the following screen

10

Customer picking up in a passenger car, ute, or van

Your progress ②

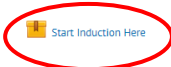
As a customer who is picking up gas products from an Air Liquide site, you have an obligation to be aware of and abide by all relevant laws and regulations including the following.

1. Chain of Responsibility
2. NTC Load Restraint Guide 2004 (2nd edn)
3. Australian Code for the Transport of Dangerous Goods by Road and Rail (7th edn)
4. Relevant state work health and safety regulations

Some of the responsibilities that you have as a driver include ensuring that:

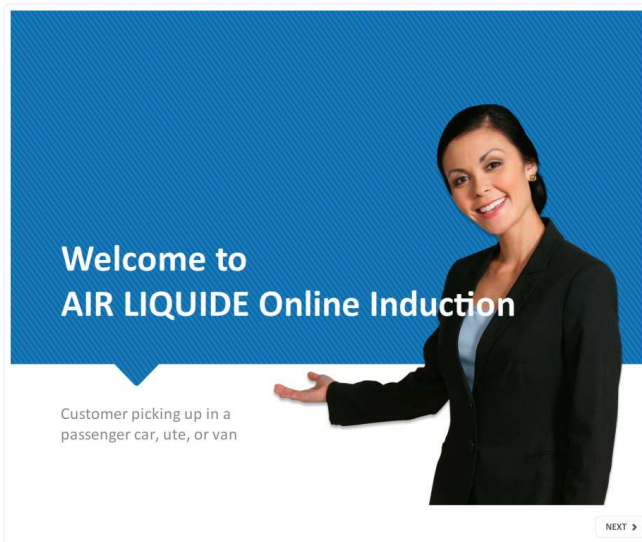
- your load is appropriately restrained and secure
- your vehicle does not exceed mass or dimension limits
- safe and responsible driving behaviour is demonstrated at all times
- you understand what has been loaded on the vehicle and the potential hazards and risks associated with the load.

As part of these requirements, Air Liquide has a legal obligation to ensure that any driver who wishes to transport products from its site is aware of, understands, and complies with these requirements.



11

The Induction course will appear on a pop up screen. Follow the prompts to complete the induction.



12

On completion of the induction a link will be provided to access the certificate:



You have completed the online Air Liquide induction.

Please print a copy of your certificate and present it to the reception staff when you arrive at one of our cylinder distribution sites.

✔ Congratulations, you passed.



13

A new web browser will pop up and the user will be returned to the course home screen. Select the “Completion Certificate”

Customer picking up in a passenger car, ute, or van

Your progress ②

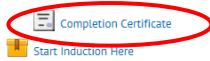
As a customer who is picking up gas products from an Air Liquide site, you have an obligation to be aware of and abide by all relevant laws and regulations including the following.

1. Chain of Responsibility
2. NTC Load Restraint Guide 2004 (2nd edn)
3. Australian Code for the Transport of Dangerous Goods by Road and Rail (7th edn)
4. Relevant state work health and safety regulations

Some of the responsibilities that you have as a driver include ensuring that:

- your load is appropriately restrained and secure
- your vehicle does not exceed mass or dimension limits
- safe and responsible driving behaviour is demonstrated at all times
- you understand what has been loaded on the vehicle and the potential hazards and risks associated with the load.

As part of these requirements, Air Liquide has a legal obligation to ensure that any driver who wishes to transport products from its site is aware of, understands, and complies with these requirements.



14

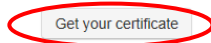
In the following screen, select “Get your certificate” and print a copy.

Congratulations on completing the induction. This certificate indicates you have successfully reached the end of the Induction program. Please print it out and take it with you when visiting Air Liquide.

Issued

Sunday, 19 October 2014, 8:06 PM

Click the button below to open your certificate in a new browser window.



15

Present your certificate to Air Liquide staff, along with your driver’s licence when you arrive to collect gas.

